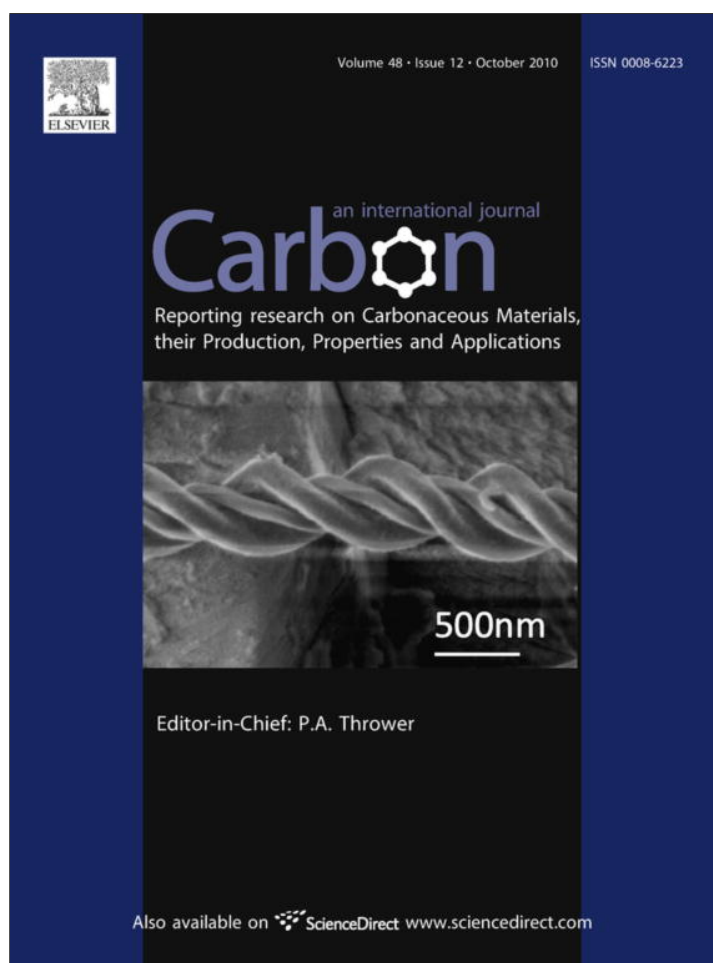


Provided for non-commercial research and education use.
Not for reproduction, distribution or commercial use.



This article appeared in a journal published by Elsevier. The attached copy is furnished to the author for internal non-commercial research and education use, including for instruction at the authors institution and sharing with colleagues.

Other uses, including reproduction and distribution, or selling or licensing copies, or posting to personal, institutional or third party websites are prohibited.

In most cases authors are permitted to post their version of the article (e.g. in Word or Tex form) to their personal website or institutional repository. Authors requiring further information regarding Elsevier's archiving and manuscript policies are encouraged to visit:

<http://www.elsevier.com/copyright>

- [2] Liu QF, Ren WC, Cheng ZG. Semiconducting properties of cup-stacked carbon nanotubes. *Carbon* 2009;47:731–6.
- [3] Endo M, Kim YA, Ezaka M, Osada K, Yanagisawa T, Hayashi T, et al. Selective and efficient impregnation of metal nanoparticles on cup-stacked-type nanofibers. *Nano Lett* 2003;3:723–6.
- [4] Choi YK, Gotoh Y, Sugimoto KI, Song SM, Yanagisawa T, Endo M. Processing and characterization of epoxy nanocomposites reinforced by cup-stacked carbon nanotubes. *Polymer* 2005;46:11489–98.
- [5] Saito K, Ohtani M, Fukuzumi F. Electron-transfer reduction of cup-stacked carbon nanotubes affording cup-shaped carbons with controlled diameter and size. *J Am Chem Soc* 2006;128:14216–7.
- [6] Hasobe T, Murata H, Kamat PV. Photoelectrochemistry of stacked-cup carbon nanotube film: tube-length dependence and charge transfer with excited porphyrin. *J Phys Chem C* 2007;111:16626–34.
- [7] Kim YA, Hayashi T, Fukai Y, Endo M, Yanagisawa T, Dresselhaus MS. Effect of ball milling on morphology of cup-stacked carbon nanotubes. *Chem Phys Lett* 2002;355:279–84.
- [8] Yokozeki T, Iwahori Y, Ishiwata S. Matrix cracking behaviors in carbon fiber/epoxy laminates filled with cup-stacked carbon nanotubes (CSCNTs). *Compos Pt A-Appl Sci Manuf* 2007;38:917–24.
- [9] Yokozeki T, Iwahori Y, Ishiwata S, Enomoto K. Mechanical properties of CFRP laminates manufactured from unidirectional prepregs using CSCNT-dispersed epoxy. *Compos Pt A-Appl Sci Manuf* 2007;38:2121–30.
- [10] Yokozeki T, Iwahori Y, Ishibashi M, Yanagisawa T, Imai K, Arai M, et al. Fracture toughness improvement of CFRP laminates by dispersion of cup-stacked carbon nanotubes. *Compos Sci Technol* 2009;69:2268–73.
- [11] Li YB, Wei BQ, Liang J, Yu Q, Wu DH. Transformation of carbon nanotubes to nanoparticles by ball milling process. *Carbon* 1999;37:493–7.
- [12] Ahm J-H, Shin H-S, Kim Y-J, Chung H. Structural modification of carbon nanotubes by various ball milling. *J Alloy Compd* 2007;434–35:428–32.
- [13] Liu Q, Ren W, Liu B, Chen ZG, Li F, Cong H, et al. Synthesis, purification and opening of short cup-stacked carbon nanotubes. *J Nanosci Nanotechnol* 2009;9:4554–60.

Elastic constants of high-texture pyrolytic carbon measured by ultrasound phase spectroscopy

J.-M. Gebert ^a, B. Reznik ^b, R. Piat ^{c,*}, B. Viering ^a, K. Weidenmann ^a, A. Wanner ^a, O. Deutschmann ^b

^a Institut für Werkstoffkunde I, Karlsruher Institut für Technologie, 76131 Karlsruhe, Germany

^b Institut für Technische Chemie und Polymerchemie, Karlsruher Institut für Technologie, 76131 Karlsruhe, Germany

^c Institut für Technische Mechanik, Karlsruher Institut für Technologie, 76131 Karlsruhe, Germany

ARTICLE INFO

Article history:

Received 23 April 2010

Accepted 2 June 2010

Available online 8 June 2010

ABSTRACT

All independent elastic constants for pyrolytic carbon with a well-documented texture are measured experimentally. According to polarized light microscopy and high-resolution transmission electron microscopy, the material is high-textured and does not exhibit any textural gradients along the deposition direction. For this material, the elastic constants were determined by ultrasound phase spectroscopy and show transverse isotropy with $C_{11} = 40$, $C_{12} = 20$, $C_{13} = 13.1$, $C_{33} = 18.2$, $C_{44} = 1.8$ GPa. The overall density was determined to be 2.178 g/cm^3 .

© 2010 Elsevier Ltd. All rights reserved.

Pyrolytic carbon (PyC) is one of the commonly used micro constituents of carbon/carbon (C/C) composites. Although this material has been extensively studied since the 1960s, there is a lack of information on the correlation between the elastic properties and microstructure of this anisotropic graphite-like material. In 1963, Papadakis and Bernstein [1] measured elastic

properties of pyrolytic graphite blocks by ultrasonic pulse-echo testing. However, these studies did not provide any structural information such as the texture degree of pyrolytic carbon.

Some of the elastic moduli were measured by Pappis and Blum [2] by tension, compression and bending tests. The effective elastic moduli of PyC can be extracted from results

* Corresponding author: Fax: +49 721 608 8297.

E-mail addresses: romana.piat@kit.edu (R. Piat).

0008-6223/\$ - see front matter © 2010 Elsevier Ltd. All rights reserved.

doi:10.1016/j.carbon.2010.06.002

of nano- and microindentation [3–6]. However, these results are not sufficient for the numerical modeling of the mechanical behaviour of the composites including PyC.

The present study aims to obtain all independent elastic constants for a PyC material with a well-documented texture degree. For this purpose the texture degree has been comparatively studied by polarized light microscopy (PLM) and high-resolution transmission electron microscopy (HRTEM) while the elastic constants have been determined by ultrasonic measurements.

The PyC investigated in present study was obtained from Schunk Kohlenstofftechnik GmbH, Heuchelheim, Germany, in the form of discs with a diameter of 100 mm and a thickness of 1.5 mm. According to the manufacturer the total amount of impurities is reported to be less than 10 ppm.

First, the spatial anisotropy of the PyC disc has been analyzed at the micrometer scale. For this purpose, the texture

degree has been studied by an improved PLM technique [7,8] allowing monitoring the texture gradients in planar deposits at the broad scale ranging approximately from 0.001 to 10 mm. The perfection and texture degree of the graphene stacks at the nanometer scale along the disc thickness has been studied by HRTEM coupled with image analysis.

Fig. 1 is a pair of optical micrographs showing typical microstructures of the PyC disc viewed with polarized light. Overlapping elongated cones appear in the cross-section prepared parallel to the deposition direction (a). The disc surface topography appears as a superposition of half-sphere units (b). Both cross-sections manifest that the studied material is a polycrystalline solid.

The results of texture examination are presented in Fig. 2. Fig. 2a shows a PLM micrograph of a polished disc cross-section. The optical anisotropy of the PyC disc has been measured within three areas corresponding to its top, centre

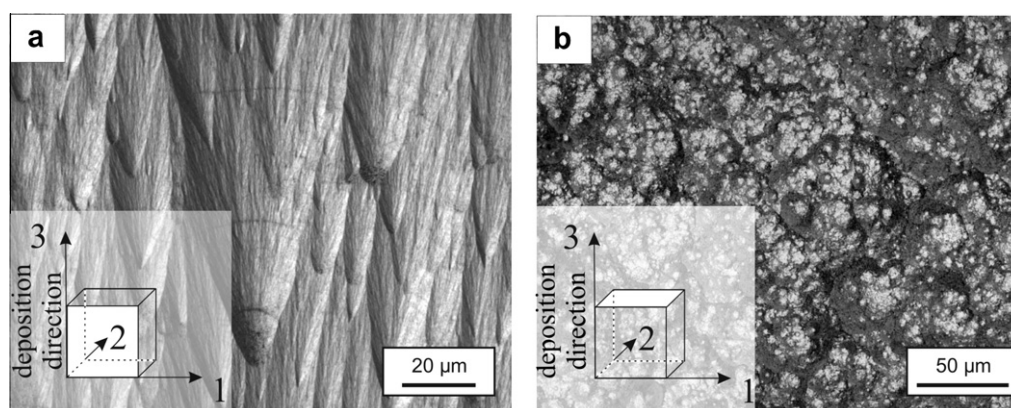


Fig. 1 – Polished cross-sections of the pyrolytic carbon disc viewed in polarized light. (a) Cross-section parallel to deposition direction and (b) cross-section perpendicular to deposition direction.

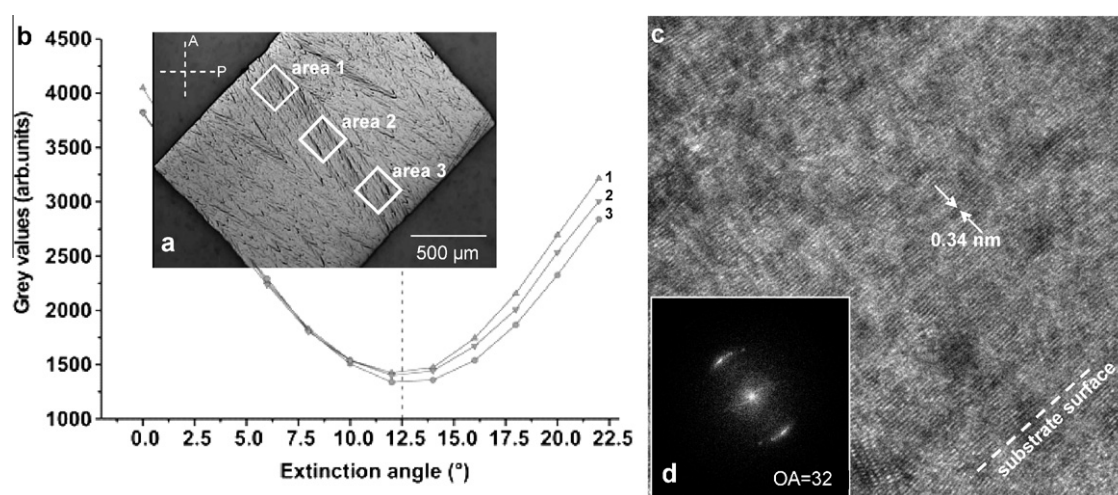


Fig. 2 – Texture examination through the thickness of the PyC disc. (a) Polarized-light optical micrograph of a cross-section. The sample is rotated to 45° with respect to the crossed analyzer (A) and polarizer (P) shown by the dashed lines. The white square-labeled areas were selected for measurements of extinction angle. (b) Photometric plots (values of the extinction angle) from the selected areas shown in (a). (c) HRTEM image showing typical for high-textured PyC graphene stacks. The dashed line in (c) shows the approximate substrate orientation. (d) FFT pattern from (c) indicating orientation angle (OA) of $32^\circ \pm 5^\circ$ corresponding to the high-textured PyC [9,10].

and bottom (areas 1–3). Fig. 2b demonstrates that in all areas the extinction angle is about 12.5° corresponding to high-textured PyC [7,8] and the absence of the textural gradients through the disc thickness.

Similar to PLM (Fig. 2a), three areas corresponding to the top, centre and bottom of the PyC disc have been selected for HRTEM studies. About 3–5 HRTEM in each point image have acquired and compared. Fig. 2c shows a representative HRTEM image of graphene stacks taken from the selected disc areas across its thickness. The lattice distance between single graphene layers is about 0.34 nm. The texture degree of the stacks has been analyzed by a Fourier image analysis (FFT) of HRTEM images [9]. The corresponding to the HRTEM image (Fig. 2c) FFT pattern (Fig. 2d) shows two arc-shaped diffraction maxima exhibiting orientation angle of $32^\circ \pm 5^\circ$ which is typical for the high-textured pyrolytic carbon [9,10]. Therefore, both PLM and HRTEM studies demonstrate that the studied material is a high-textured, gradient free PyC.

For ultrasonic studies, beams with cross-section $1.5 \times 1.5 \text{ mm}^2$ were cut from the middle of the disc using a diamond wire saw according to Fig. 3a. The two outer beams were cut into 36 samples (dimensions about $1.5 \times 1.5 \times 5.0 \text{ mm}$), for which the density was determined according to the Archimedes principle. Measurements of 36 samples show a mean density of 2.178 g/cm^3 and a standard deviation of 0.0078 g/cm^3 and it can be concluded that the PyC material can be considered to be homogeneous. For ultrasound phase spectroscopy measurements, the inner beams were cut into samples with faces perpendicular to the 2-axis (Fig. 3b) and into samples rotated under 45° to the 3-axis (Fig. 3c). The obtained samples were sufficient for wave velocity measurements to determine all five independent elastic constants for transversal isotropic material.

The velocities were measured with ultrasound phase spectroscopy [11–13]. An Advantest network analyzer (R3754A, ADVANTEST®) was used to generate continuous harmonic waves. Two identical pairs of transducers were used for longitudinal (Panametrics V122, PANAMETRICS®) and shear waves (Panametrics V155, PANAMETRICS®) to measure the phase delay in the frequency range of 10 kHz–15 MHz for longitudinal waves and 10 kHz–10 MHz for shear waves. Water solvable syrup was used to couple the transducers to the samples.

The results of the ultrasonic measurements are presented in Table 1. When averaging the results for U_{11} and U_{22} , for U_{12} and U_{21} , and for U_{23} , U_{32} , U_{13} and U_{31} , very small relative standard deviations are obtained, which indicates the presence of transverse isotropy. The velocity U_{1313} is a longitudinal wave

Table 1 – Results of ultrasound phase spectroscopy. The right column of the wave velocity shows the standard deviation of all measurements divided by the mean velocity.

	Wave velocities considered for averaging	Average values for velocities (m/s)	Relative standard deviations (%)
Four samples according to Fig. 3b	U_{11}, U_{22}	4304	3.3
	U_{33}	2902	2.4
	U_{12}, U_{21}	2151	5.5
	$U_{23}, U_{32}, U_{13}, U_{31}$	907	2.6
Six samples according to Fig. 3c	U_{1313}	3370	4.3

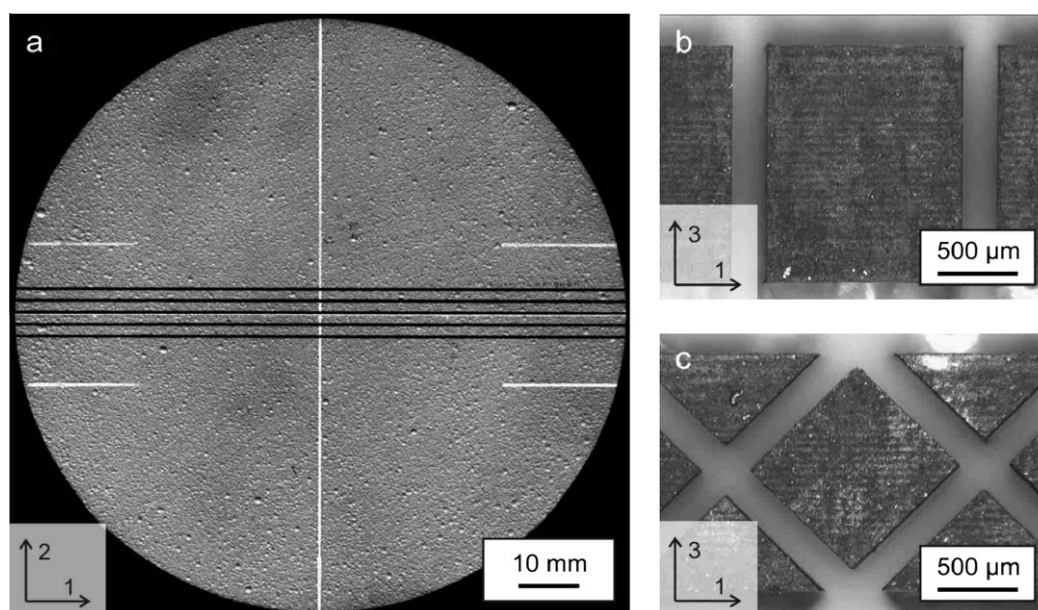


Fig. 3 – Preparation of samples for ultrasound phase spectroscopy: (a) Beams cut from the middle part of the PyC disc (view from the top, white lines are guidelines for preparation), (b) cut of the beam parallel to deposition direction and (c) cut of the beam under angle 45° to the deposition direction.

Table 2 – Calculated elastic constants from the wave velocities presented in Table 1 and comparison to literature values. The values in brackets for the elastic constants represent the standard deviation divided by the mean value for the presented results.

PyC	ρ (g/cm ³)	Measurement method	C_{11} [GPa]	C_{12} [GPa]	C_{13} [GPa]	C_{33} [GPa]	C_{44} [GPa]	E_1 [GPa]	E_3 [GPa]
Present studies	2.178	Ultrasound phase spectroscopy (continuous waves technique)	40.0 (7%)	20.0 (17%)	13.1 (46%)	18.2 (5%)	1.8 (6%)	27.1	12.8
[1]	2.16	Ultrasonic (impulse-echo technique)	52.1 (5%)	18.8 (23%)	18.0 (56%)	25.8 (5%)	1.5 (5%)	38.6	16.7

velocity propagating in the bisectrix in the 1–3-plane according to Fig. 3c.

Based on the wave velocities presented in Table 1, the elastic constants are calculated [14] and compared to literature values in Table 2. It can be seen that the magnitude of the elastic constants is in general smaller compared to the results of Papadakis and Bernstein. Probably the texture degree of the material studied by Papadakis and Bernstein [1] and in the present study was not identical. The relative inaccuracy of the elastic constants is in the same range compared to Papadakis and Bernstein (values in brackets).

The authors explained the high inaccuracy of C_{13} with the error propagation for this constant. By comparison to destructive compression tests, they concluded that the value of C_{13} is quite realistic and the error should be much smaller than estimated on the basis of the ultrasonic measurements and error propagation. Instead of estimating the maximum experimental error [1] we used the standard deviations of the corresponding velocities as a value of inaccuracy.

All independent elastic constants for pyrolytic carbon with a well-documented texture are measured experimentally. These results are of especial importance for the numerical modeling of mechanical behaviour of composites including PyC as micro constituents.

Acknowledgements

The support of the DFG-NSF Project: “Materials World Network: Multi-Scale Study of Chemical Vapor Infiltrated C/C Composites” and DFG Heisenberg fellowship are gratefully acknowledged.

REFERENCES

- [1] Papadakis EP, Bernstein H. Elastic moduli of pyrolytic graphite. *J Acoust Soc Am* 1963;35(4):521–4.
- [2] Pappis J, Blum SL. Properties of pyrolytic graphite. *J Am Ceram Soc* 1961;44(12):592–7.
- [3] Diss P, Lamon J, Carpentier L, Loubet JL, Kapsa Ph. Sharp indentation behavior of carbon/carbon composites and varieties of carbon. *Carbon* 2002;40(14):2567–79.
- [4] Taylor CA, Wayne MF, Chiu WKS. Residual stress measurement in thin carbon films by Raman spectroscopy and nanoindentation. *Thin Solid Films* 2003;429(1–2):190–200.
- [5] Guellali M, Oberacker R, Hoffmann MJ. Influence of heat treatment on microstructure and properties of highly textured pyrocarbons deposited during CVD at about 1100 °C and above 2000 °C. *Compos Sci Technol* 2008;68(5):1122–30.
- [6] Piat R, Tsukrov I, Böhlke T, Bronzel N, Shrinivasa T, Reznik B, et al. Numerical studies of the influence of textural gradients on the local stress concentrations around fibers in carbon/carbon composites. *Commun Numeric Methods Eng* 2008;24(12):2194–205.
- [7] Reznik B, Gerthsen D, Bortchagovsky E. An improved method for angular-resolved characterization of the optical anisotropy of pyrolytic carbon. *J Microsc* 2006;224(3):322–7.
- [8] Bortchagovsky EG, Reznik BD, Gerthsen D, Pfrang A, Schimmel Th. Optical properties of pyrolytic carbon deposits deduced from measurements of the extinction angle by polarized light microscopy. *Carbon* 2003;41(12):2427–51.
- [9] Reznik B, Gerthsen D. Microscopic study of failure mechanisms in infiltrated carbon fiber felts. *Carbon* 2003;41(1):57–69.
- [10] Reznik B, Hüttinger KJ. On the terminology for pyrolytic carbon. *Carbon* 2002;40(4):621–4.
- [11] Lynnworth LC, Papadakis EP, Rea WR. Ultrasonic measurements of phase and group velocity using continuous wave transmission techniques. AMMRC CTR73-2 Final Report DAAG46-72-C-0186; 1973.
- [12] Papadakis EP. Ultrasonic velocity and attenuation: measurement methods with scientific and industrial applications. *Phys Acoust* 1976;XII:277–4.
- [13] Wanner A. Elastic modulus measurements of extremely porous ceramic materials by ultrasonic phase spectroscopy. *Mater Sci Eng* 1998;A248:35–43.
- [14] Every A, Sachse W. Dynamic methods for measuring the elastic properties of solids. In: Levy M, Bass H, Stern R, editors. *Handbook of elastic properties of solids, liquids and gases*, vol. 1, San Diego: Academic Press; 2001.