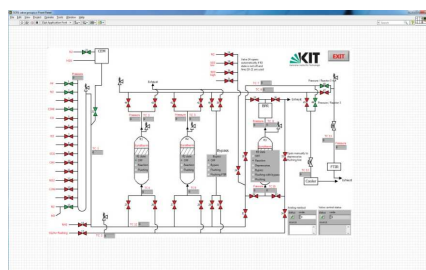


Lab test benches: High-Pressure setup



Staff: Dr. Maria Casapu, Jan Pesek

Tests of catalyst coated honeycombs (metallic and ceramic substrate): $\varnothing = 2\text{--}2.54\text{ cm}$, length $< 6\text{ cm}$

Labview automatic controlled measurements; sulfur resistant (pipes, reactor, analytics coated)

Dosage of gaseous Formaldehyde

Gases: NO, NO₂, NH₃, CO, HC, SO₂,
up to 10 components in
addition to H₂O, O₂ and N₂

Temperature: RT – 650°C

Pressure: 1- 5 bar

Flow: 10 - 45 slpm

Gas analytics: FTIR, (MS), pressure drop

Applications: DOC, SCR, gas engine, ...

Available for research and service